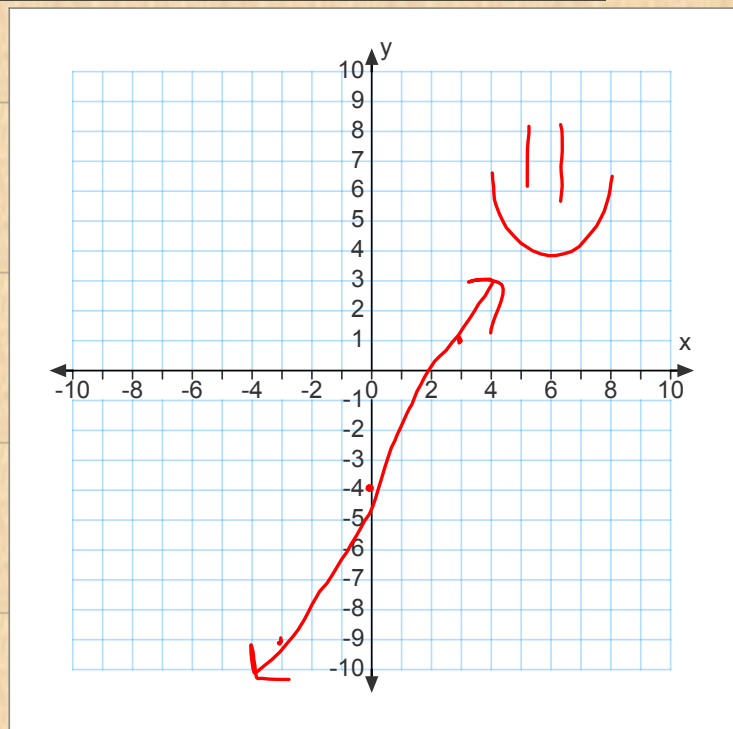


DO NOW

Graph

$$3y + 5x = -12$$

$$\begin{array}{r} 5x \quad 5x \\ \hline 3y = 5x + -12 \\ \hline 3 \quad 3 \quad 3 \\ y = \frac{5x}{3} + -4 \end{array}$$



Factoring

$$23 \quad 1 \cdot 23$$

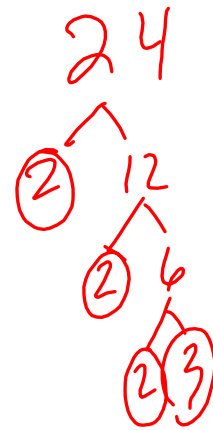
$$35 \quad 5 \cdot 7$$

$$18 \quad 3 \cdot 3 \cdot 2$$

$$24x^2yz^3$$

$$2 \cdot 2 \cdot 2 \cdot 3 \cdot x \cdot x \cdot y \cdot z \cdot z \cdot z$$

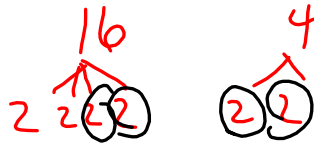
$$-39 \quad -1 \cdot 3 \cdot 13$$



GCF

16, 4

4



$2x^2, 4x, 6$

2

$-3x^2, -7x, -25$

-1

$15a^2b$ $28xy^3$

1

Homework

Page 478 #40-58 even

479 #72-79 all

#81-86 all

